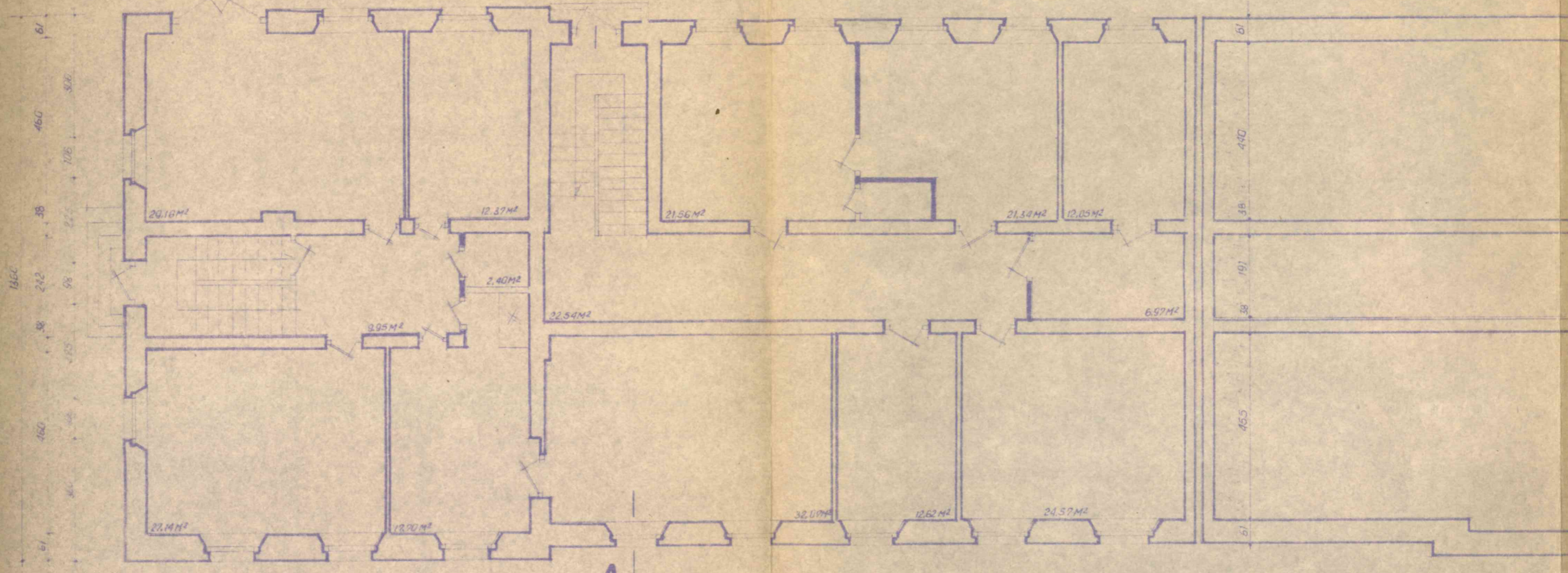


61 634 12 268^s 51 239 38 440^s 65^s 485 12 274
 130 220 140 120 170 120 140 38 100 150 120 140 120 140 120 140 120

A



190 110 185 110 165 110 190 113 110 194 110 197 110 196 110 195 110
 61 590 12 61 705 12 276 12 540 110
 1040 2160

A